



MONTHLY MEMBERSHIP PROGRESS REPORT

District 13 OH3

Results as of: 10/31/2017

GMT: CINDY GREGG

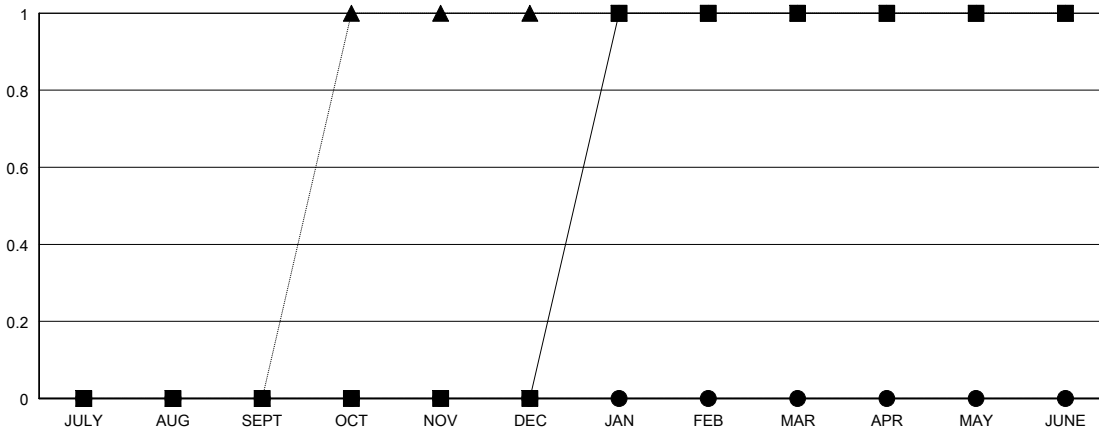
LOCATION OHIO

GMT CA

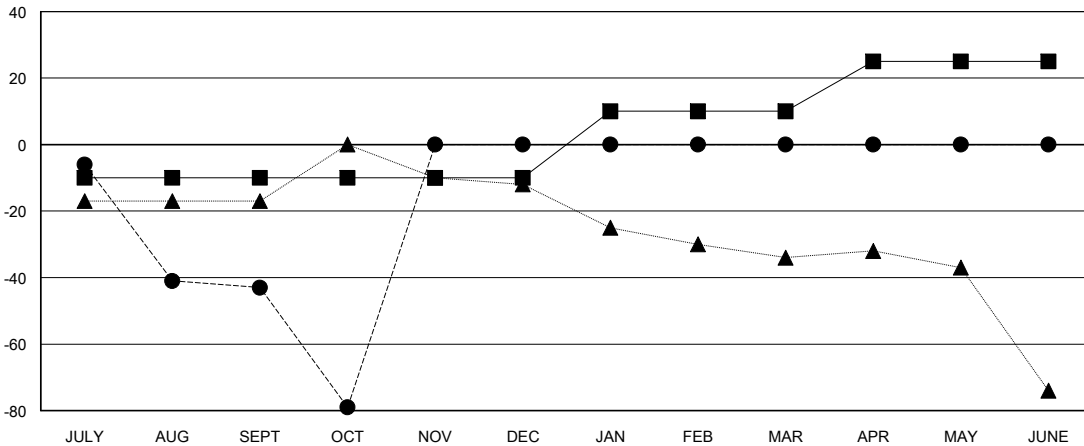
Clubs			
RESULTS FOR 2017-2018			
QUARTER	NEW CLUB GOAL	NEW CLUBS	DROPPED CLUBS
JULY/AUG/SEPT	0	0	0
OCT/NOV/DEC	0	0	1
JAN/FEB/MAR	1	0	0
APR/MAY/JUNE	0	0	0

Members			
RESULTS FOR 2017-2018			
QUARTER	MEMBER GROWTH NET GOAL	MEMBER GROWTH ACTUAL	DROPPED MEMBERS ACTUAL (including transfers)
JULY/AUG/SEPT	-10	25	60
OCT/NOV/DEC	0	25	45
JAN/FEB/MAR	20	0	0
APR/MAY/JUNE	15	0	0

GOALS AND ACTUAL NEW CLUBS CUMULATIVE



GOALS AND ACTUAL MEMBERS CUMULATIVE



DROPPED CLUBS: 1	16 CLUBS OF 61 ADDED 1 OR MORE NEW MEMBERS	<u>GENDER DISTRIBUTION</u> MALE 1,110 (68.94%) FEMALE 500 (31.06%) Women Percentage Fiscal Year Goal: 32%
<u>DROPPED MEMBERS</u> DECEASED 4 CLUB CANCELLED 0 OTHER 101 TOTAL 105	CLICK HERE FOR CUMULATIVE MEMBERSHIP DATA	TOTAL FAMILY UNIT MEMBERS 292 FAMILY MEMBERS PAYING HALF DUES 150